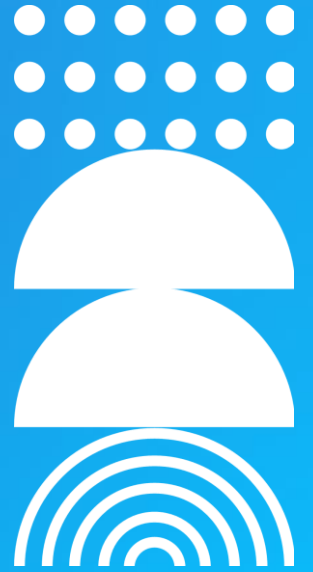


The future of regulatory returns

Carol Ebbrell | Senior Product Manager



Disclaimer



Presentations by individuals who are employed by third parties, such as colleges or universities, may contain views that are attributable only to the presenter and not to presenter's employer.

Presentations regarding Ellucian products and services are confidential and the property of Ellucian, and do not constitute a commitment, promise or other obligation to deliver any material code or functionality. Such presentations should not be relied upon in making any purchase decision. Development and release of Ellucian products and services may change, without prior notice, at Ellucian's discretion.



01 **Needs**

02 **Irritations**

03 **Solution**

04 **Questions**



NEEDS

What Regulators expect vs what institutions have



Context

Regulators

- Higher Education funding is driven by Policy which is informed by data collected by Regulators from Institutions
- Regulators change the data sets they require to provide an adaptive view of the impact of funding on social equity, employment and the economy
- Both Macro and Institution level funding are determined by the nature of provision and the outcomes achieved



Context

Institutions

- Require student software to run the university processes and ensure compliance to teaching standards
- Require the student software to then output the regulators requirements



IRRITATIONS

Where to begin...



Returns Officer

**1**

Doesn't own the data

- Registrar's own the data for a return because it is housed in the student system so only small parts are accessible to a returns officer for update directly

2

Multiple systems for a return

- There are multiple systems to run a return with different interfaces
- No ability to amend data in bulk without IT help

3

Inability to own return versions

- Upgrades happen when the various stakeholders agree, and they are only one of many who have needs in this 24/7 world

4

Inability to go to the source for information

- Data missing is a large problem, so the inability to get that data when they need it is a major irritation

Registrar

**1**

Owens the data because its in the SIS

- Has no need or use for some of the data but gets impacted by it

2

Unease with downtime for regulatory fixes/version changes

- Upgrades must happen to comply, but affect the Registrar with downtime and testing

3

Inability to get data from the source easily

- Data missing is a large problem, so the inability to get that data when they need it is a major irritation as they are constantly pestered for it from the RO

IT Department

**1**

Owens the running of the system the data is in

- They have no idea on returns or the timelines etc

2

Too busy to apply fixes or upgrades

- They get irritated at the number of upgrades they must manage just for regulatory changes alone

3

Too many requests for bulk data changes and customisations

- Why can't you use the system the way the system wants you to work

I think all those folks feel like this guy sometimes



Student/Learner

**1**

Gets repeatedly asked for data they feel is sensitive

- Will give it once if there is a good reason, but being asked for it repeatedly is irritating

2

Unable to view the data stored about them easily

- Let us see what is stored so we are informed, which currently they aren't, and allow us to update that data when we see it is wrong

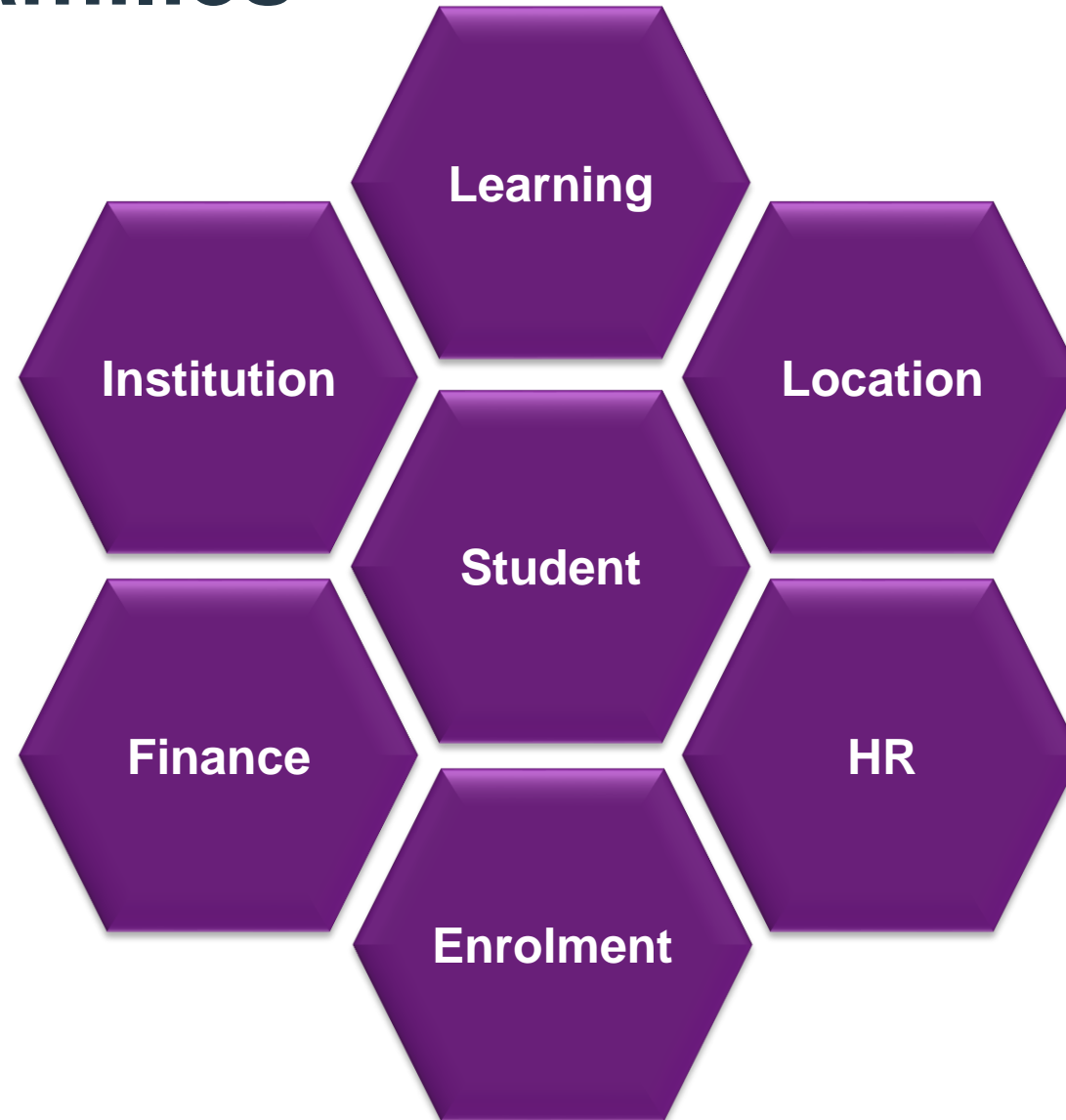


SOLUTION

Requirements



Return Families



SOLUTION

Demo



Demo

Edit

Load

Import

Extract

Search

Ellucian Regulatory ✕

Return Types Course Location

Regulator: HESA ▼ Return Type: UNISTATS ▼ LOAD CREATE RETURN FILE

Period (ERP) ▼ Contains ▼ Enter the field value +

ACTIVE : YES ✕ 🗑️

Period (ERP) ▲	Version (ERP)	File	Date Created	Created By	Updated By	Active	Locked	Final	Comments	Actions
----------------	---------------	------	--------------	------------	------------	--------	--------	-------	----------	---------

▶ C22061 (3 items)

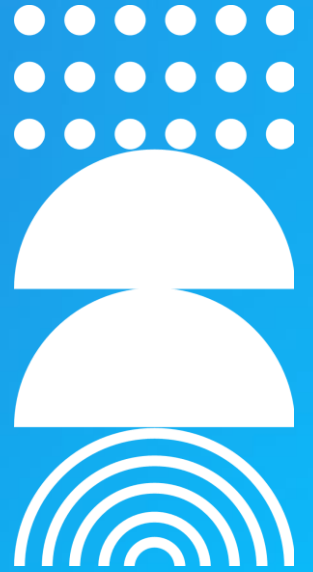
▶ C23061 (4 items)

▼ C24061 (1 items)

C24061	1.5	External File Reco...	2023-12-13	Frank		<input checked="" type="checkbox"/>	<input type="checkbox"/>	<input type="checkbox"/>	<input type="text"/>	
--------	-----	---------------------------------------	------------	-------	--	-------------------------------------	--------------------------	--------------------------	----------------------	--

QUESTIONS





THANK YOU

The future of regulatory returns

Carol Ebbrell Senior Product Manager



 **ellucian**
USER CONFERENCE

Europe

