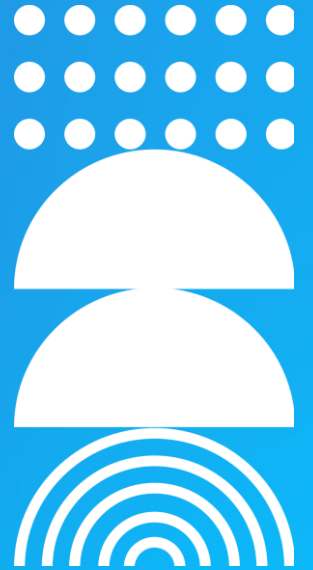


# HESA Data Futures: Reducing Burden

Helen Ferneyhough, Ellucian, Product Manager

Helen Bailey, Digital Platform Manager (Banner), University of Central Lancashire

Andrea Baldini, Data Developer Strategic Planning and Change, Nottingham Trent University





# Disclaimer

Presentations by individuals who are employed by third parties, such as colleges or universities, may contain views that are attributable only to the presenter and not to presenter's employer.

Presentations regarding Ellucian products and services are confidential and the property of Ellucian, and do not constitute a commitment, promise or other obligation to deliver any material code or functionality. Such presentations should not be relied upon in making any purchase decision. Development and release of Ellucian products and services may change, without prior notice, at Ellucian's discretion.

# HESA Data Futures: Reducing Burden



- 01** Overview from Ellucian
- 02** Experience from University of Central Lancashire (IT perspective)
- 03** Experience from Nottingham Trent University
- 04** Questions?



# Overview from Ellucian

Helen Ferneyhough

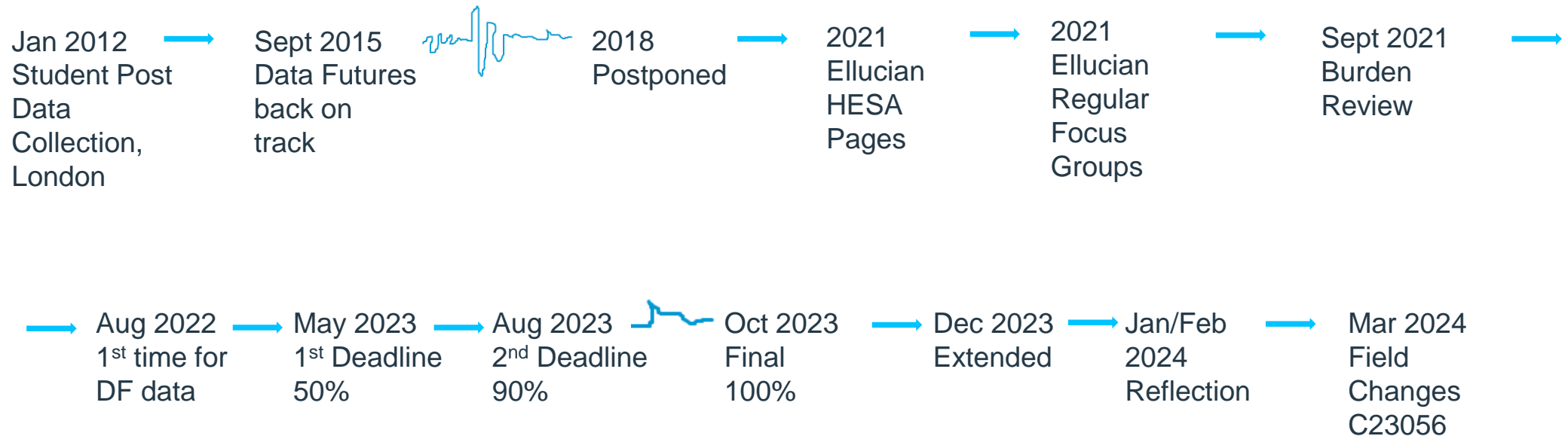
- Product Manager mainly responsible for Regulatory HESA and Student Loans Company
  - Joined 20 months ago to provide additional support to HESA data futures working alongside the UK and Ireland team
  - Previously employed by Staffordshire University for over 30 years
- 
- **linked in** : [www.linkedin.com/in/helen-ferneyhough](http://www.linkedin.com/in/helen-ferneyhough)
  - **email** : [helen.ferneyhough@ellucian.com](mailto:helen.ferneyhough@ellucian.com)



# Data Futures – Key Milestones

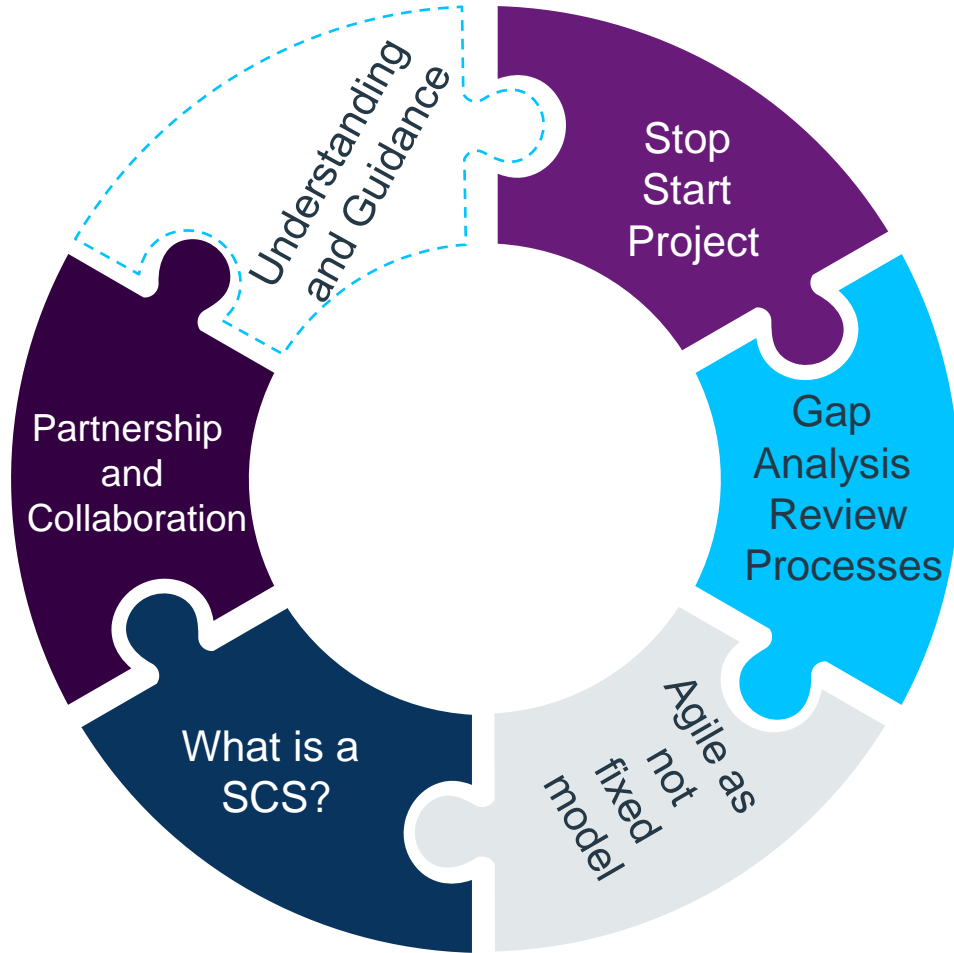
## Where did it all start?

KEY MILESTONES

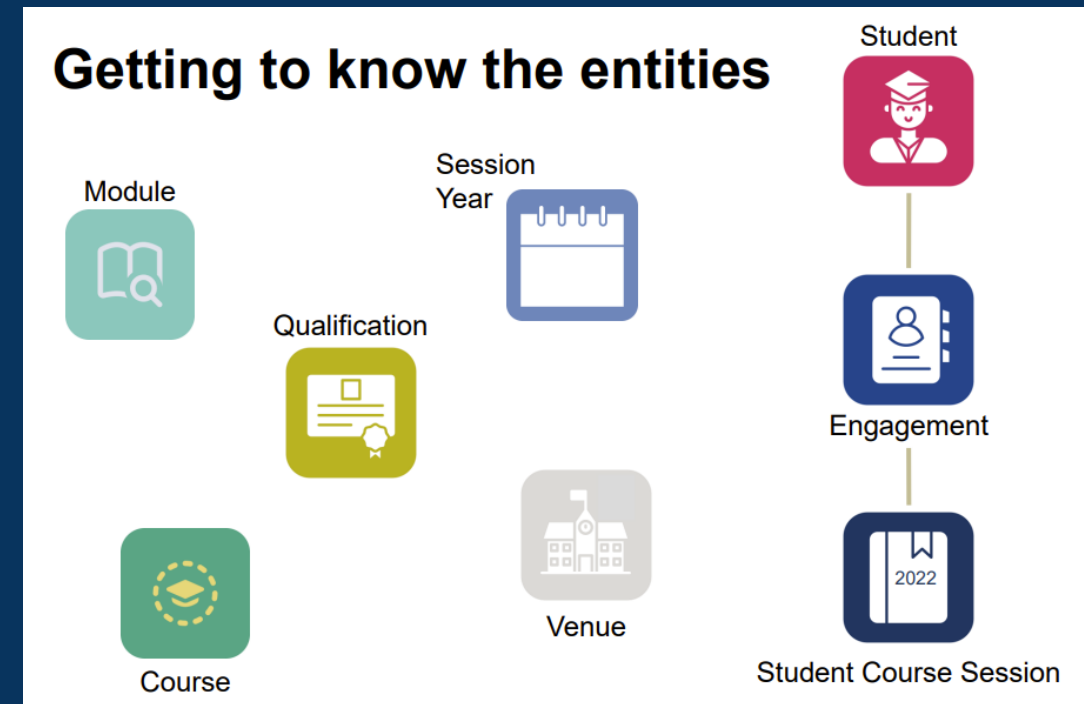


# Journey to Submission

## Key Areas



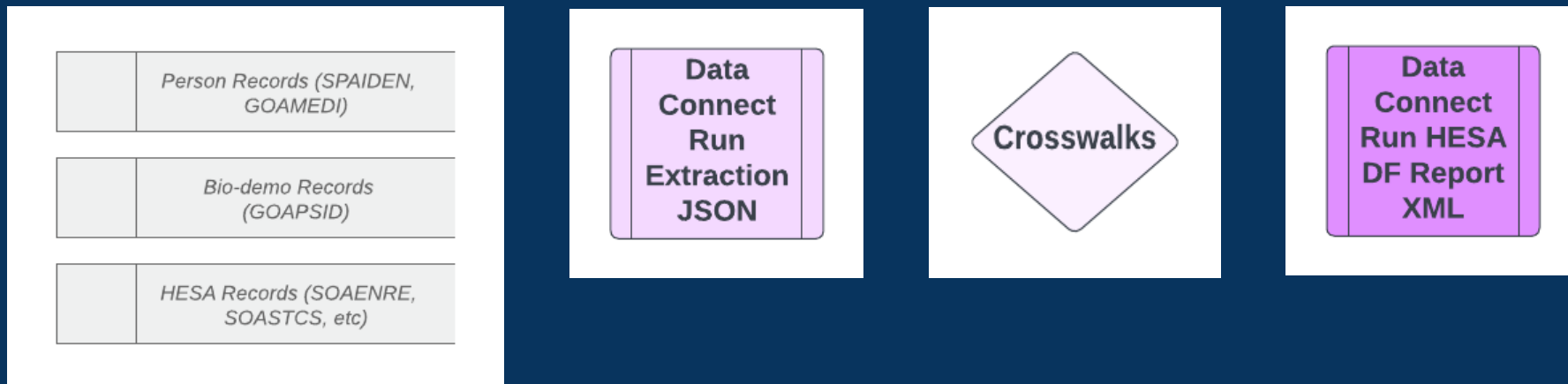
## Unpacking the Entities



# Data Connect - Pipeline



- Enabled combined pipeline between products to increase productivity
- Fast and more flexible way to deliver necessary regulatory integrations
- Enables coverage of transactional data to be implemented





# Legacy HESA Student and HESA Alternative Provider Return (Pre 2022)

Agreed in 1993 to create a new framework HESA

Became business as usual

Each year few extra fields/values

Model in the main standard

Early notification of changes







# Legacy HESA Student and HESA Alternative Provider Return (Pre 2022)

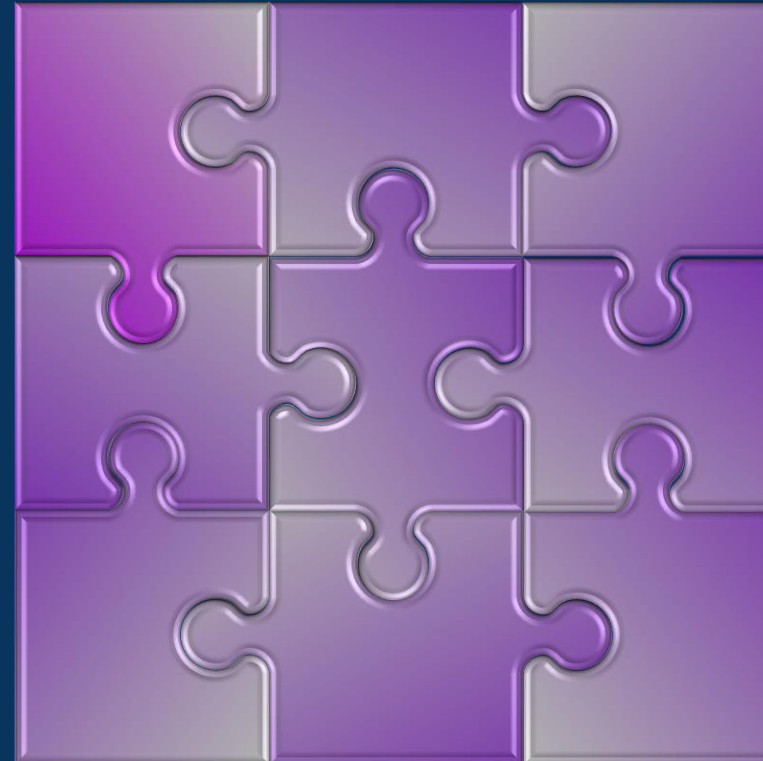
Agreed in 1993 to create a new  
framework HESA

Became business as usual

Each year few extra fields/values

Model in the main standard

Early notification of changes

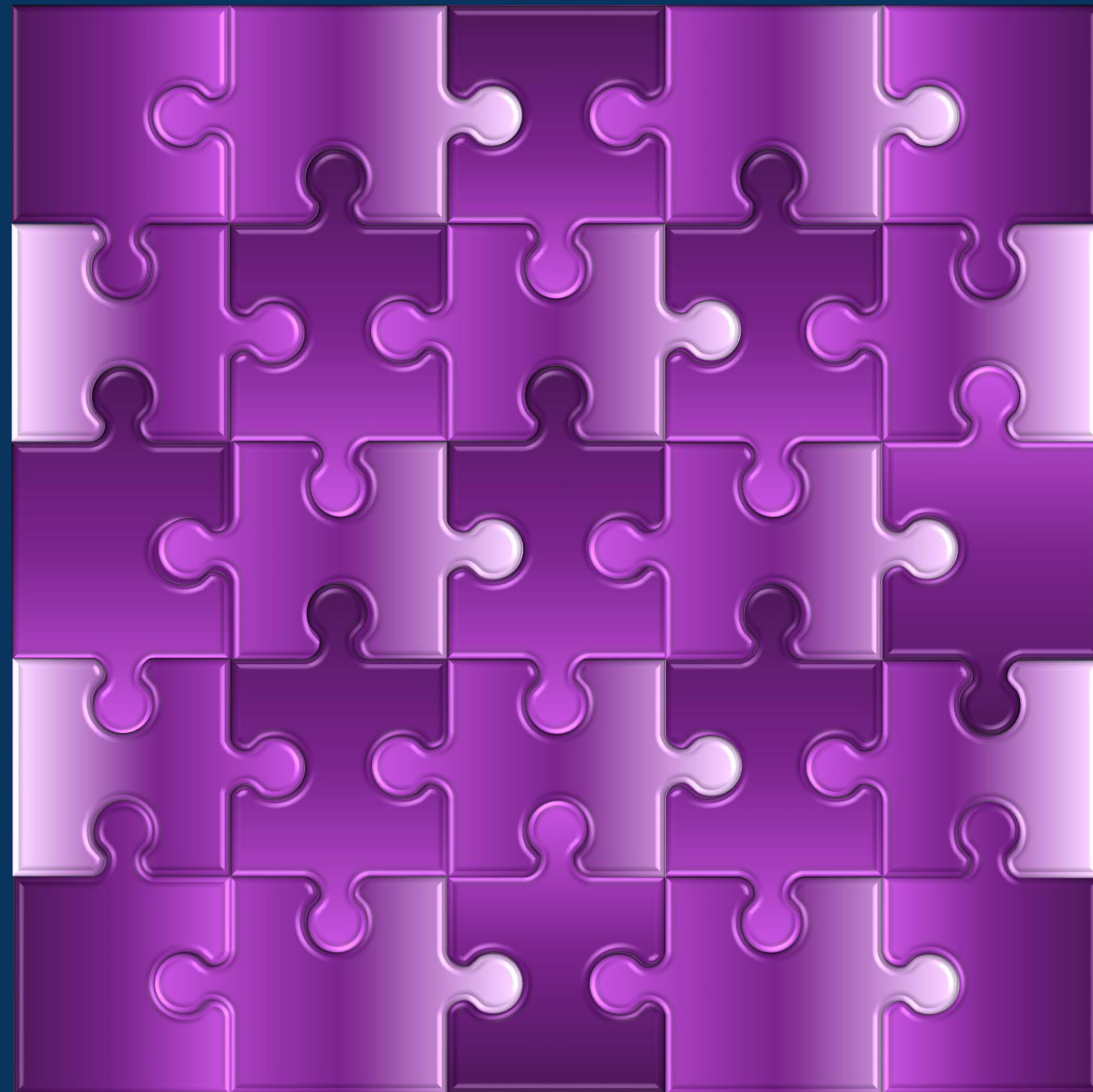


# HESA Data Futures

- Issued with a new data model
- New entities
- New fields and values
- New concept of reference period
- New concept of student course session

# HESA Data Futures

- Issued with a new data model
- New entities
- New fields and values
- New concept of reference period
- New concept of student course session



# Ellucian Developments 2022/2023



**COVERAGE**

Changing model and guidance

**FLEXIBILITY**

Crosswalks

**TRANSFORM**

XML pipeline

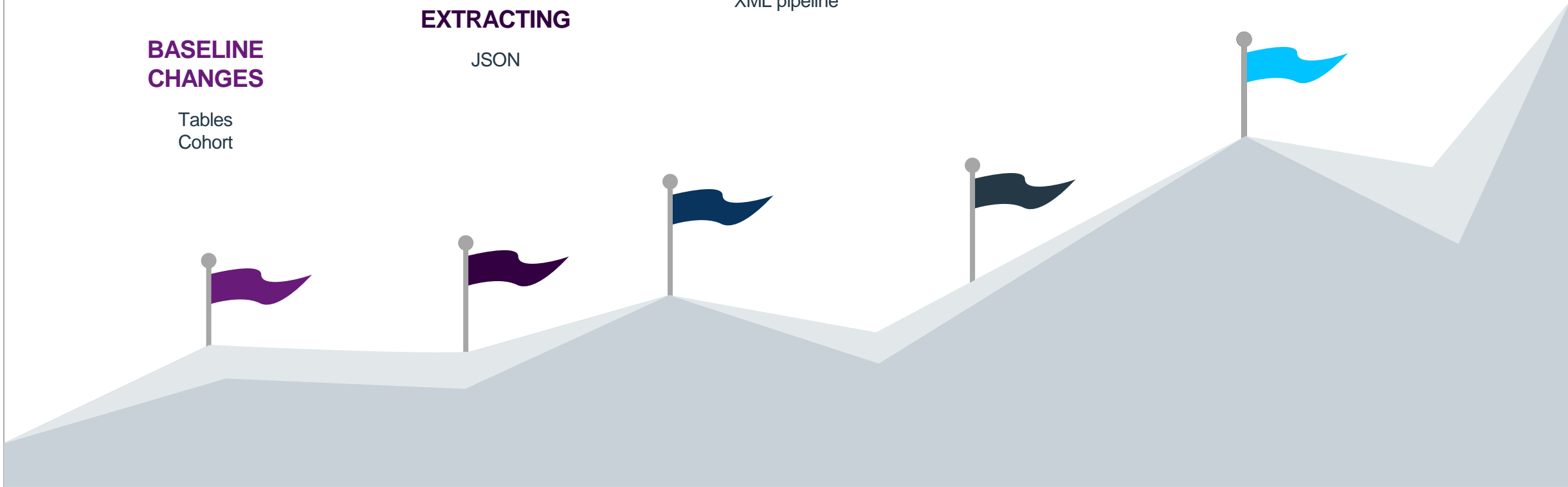
**EXTRACTING**

JSON

**BASELINE CHANGES**

Tables  
Cohort

ELLUCIAN DEVELOPMENTS 2022/2023





# Ellucian 2024 Planned Developments

2024 DEVELOPMENTS



- REFLECTION
- PIPELINE
- COVERAGE RULES
- COHORTS

# Helen Ferneyhough

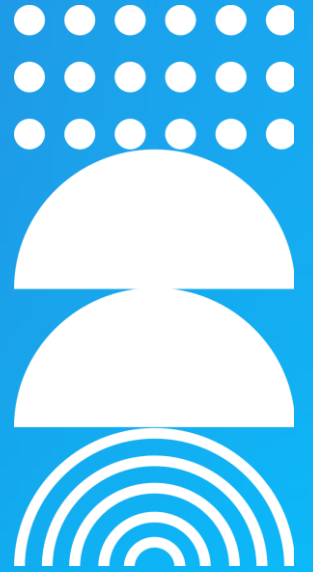


## Key themes moving forward

- Continue to support and embed the Student Return
- Monitor carefully changes to AOR, ITT, Discover Uni and Graduate Outcomes
- Continue to look for new ways of working to increase productivity, improve accuracy and try to reduce the burden of regulatory returns
- Work alongside DFE on the new ITT return
- Await the independent review
- Continue our relationship with HESA
- Most importantly continue to collaborate with yourselves

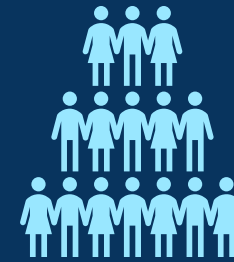
# Approach from University of Central Lancashire from an IT perspective

Helen Bailey, Digital Platform Manager (Banner), University of Central Lancashire



# HESA Data Futures

- Return 29,500 Students to HESA
- Multi Campus Delivery, Burnley, Westlakes and Cyprus and now recruiting at UCLan London
- UK and Overseas Partnership Provision
- All students 37,000
- Diverse Academic Portfolio, multiple intakes including:
- Clinical Provision, Medical and Dentistry Schools, Nursing, Paramedics, Social Work and Midwifery
- Degree Apprenticeships
- Research Degrees
- Vet School new 202324 Academic Year





# How it Started

## Assemble the HDF team!

Architect (IT): 0.5

SME (IT): 0.75

Systems Analyst (IT): 0.75

Developer (IT): 0.75

Contractor Role (IT) 0.2

HDF Project Officer (IT/Business)

Head of Returns (Business)

Returns Officer (Business)

Returns Administrator (Business)

## -- NEW STAFF 2023—

Dedicated Business Analyst (IT): 1.0

Dedicated Systems Analyst (IT): 1.0

Extra Developer Resource (IT): 0.5

# Ways of Working

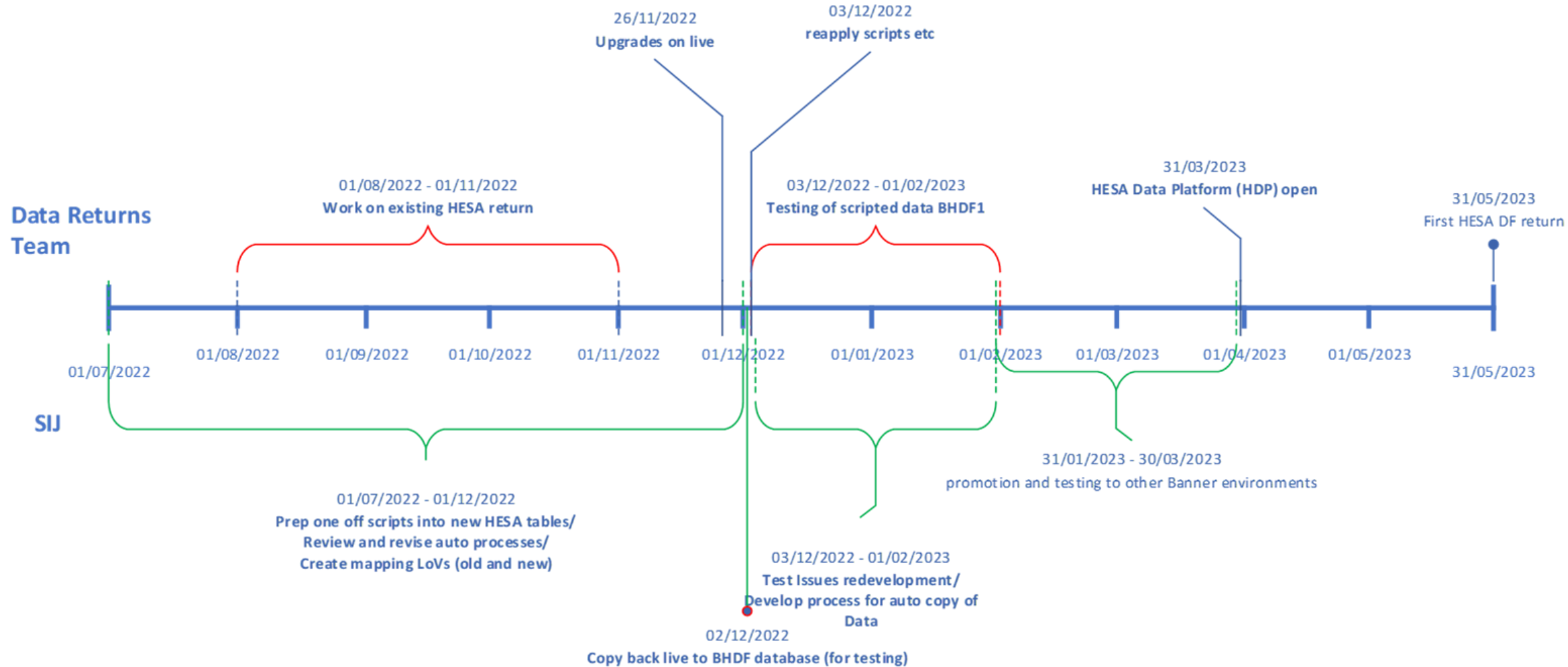


- Used Agile Methodology
- IT and Business working together as the HESA Data Futures Team
- Overall timeline created but worked in 2 week sprints
- We were able to review timelines and pivot quickly when issues arose
- Iterative Agile Development



# UCLan Milestones - May

May Return



# Our Approach....



## May Return

- **Analysis of old tables to new**
- **Mapped at a field level old to new where possible.**
- **Review existing scripts/cron jobs for majority of Students**
- **Create triggers on the database**
- **Began working on Scripts to populate the new HESA Tables in Banner**
- **2 Full Banner Upgrades on Live in May**
- **Set up of Ethos Data Connect**
- **Focused on passing Schema**

## August and December

August passed submission from May's return

Upgraded Cloned DB with latest Release

Cloned a copy of Production Database 31<sup>st</sup> July

Set up Experience Data Connect on Cloned Environment

Locked all users out apart from returns team & Data Management Team

Updating Data via manual entry and script

Biggest challenges understanding Student Course Session and the relationship between that and Module Instances

Aligning Dates

Review and Resubmit, More Scripts

# How it ended.....



- Lots of submissions to understand and correcting errors BUT.....
- Submitted and Signed Off
- HESA Record still remains in Cloned Environment
- Now need to work on how to get the data from clone to Production



# Next Steps?

**Review our 2023 approach with a Retrospective**

**Work ongoing with the Architect Team**

**Learn from Ellucian and Other HEI's**

**Reduce the Burden for our Returns Team and Data Management Team**

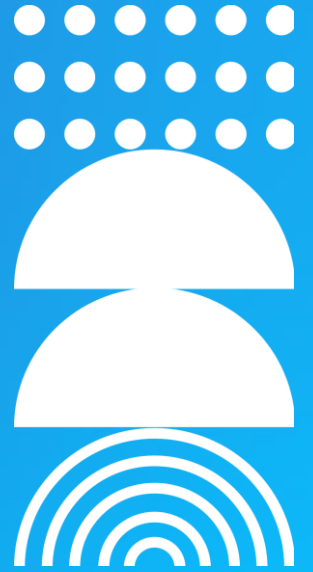
**Question Ambiguities**

**Analysis of what exactly does a Student Course Session really mean?**

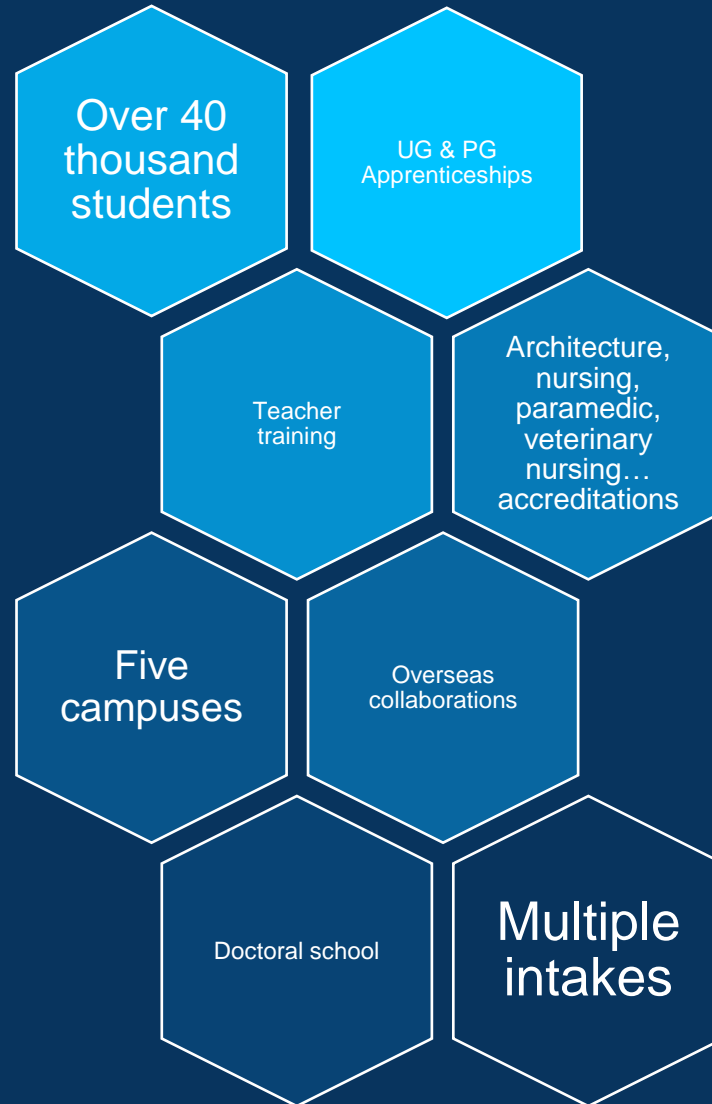
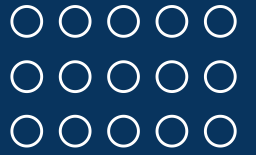


# Approach from Nottingham Trent University

Andrea Baldini, Data Developer Strategic Planning and Change, Nottingham Trent University



# Teaching provision at NTU



# Outline

- Business processes
- Technical tools
- Approaches
- Challenges





# Business processes

## Online enrolment

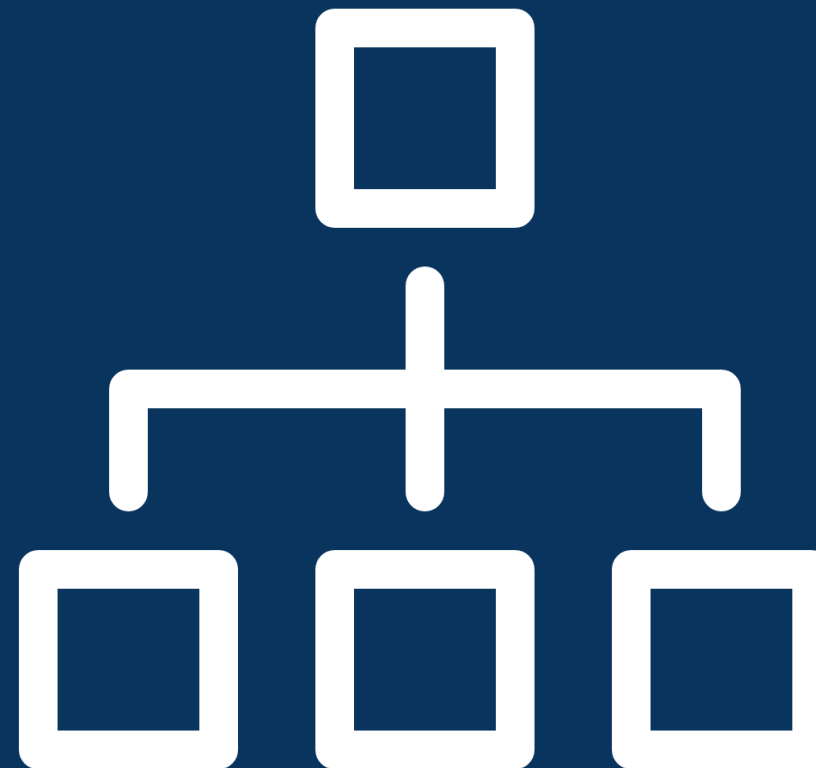
- Creation of a new GOAPSID report
- Review and update of picklists

## Course build

- Revision of pro forma
- Re-coding of Banner “loader” to populate new HDF pages

## Withdrawal/Break in Study workflows

- Revision of process
- Specific focus on dates



# Technical tools

## Student Course Session rollover

- When a record rolls from admissions to student
- When a record rolls from one year to the next

## Transformations

- Definition of transformation logic for most HESA fields
- Development of SQL code
- Implementation of a MDUU tree to run the transformations (purge, insert or update)

## Data load

- Data upload via csv files (with table primary key and field to update/insert)
- The csv file is uploaded to the server and the process is run via a MDUU tree



# Approaches



## A few highlights

- SCSESSIONID equal academic term
- SGACHRT “From term” represents the highest academic term within the Engagement.
  - This field was then used to join to baseline tables
- Reliance on SKAPMYR (course year attributes) to inform our SCS transformations
- Logic targeting any SCS falling within the reference period

# Challenges

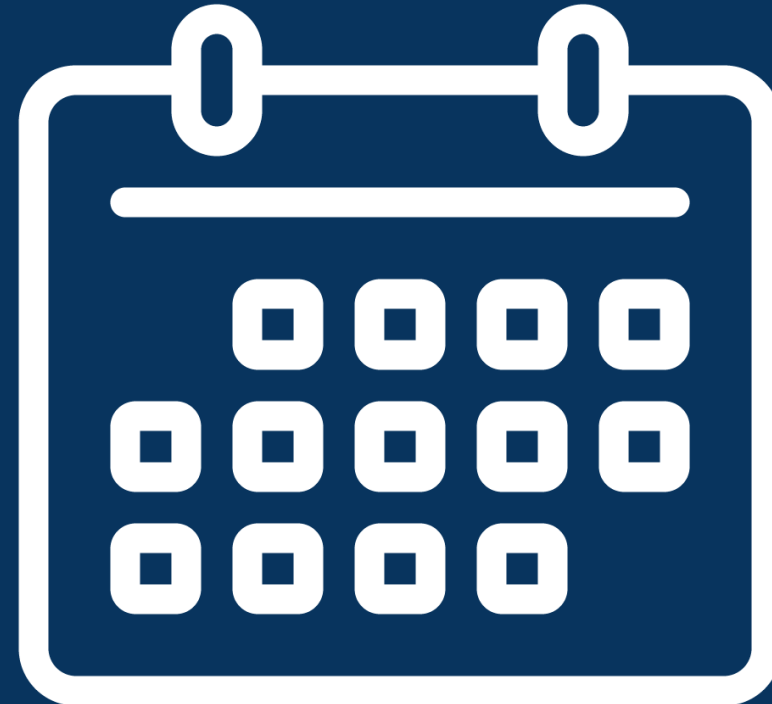


## Dates

- HDF model driven by dates
- SCSSTARTDATE: assumption introduced into the model
- Largely notional Module Instance dates
- Careful consideration to dormancy

## Errors

- Largest number of errors related to STULOAD



## Questions

email: [helen.ferneyhough@ellucian.com](mailto:helen.ferneyhough@ellucian.com)

join Banner UK and Ireland Forum

