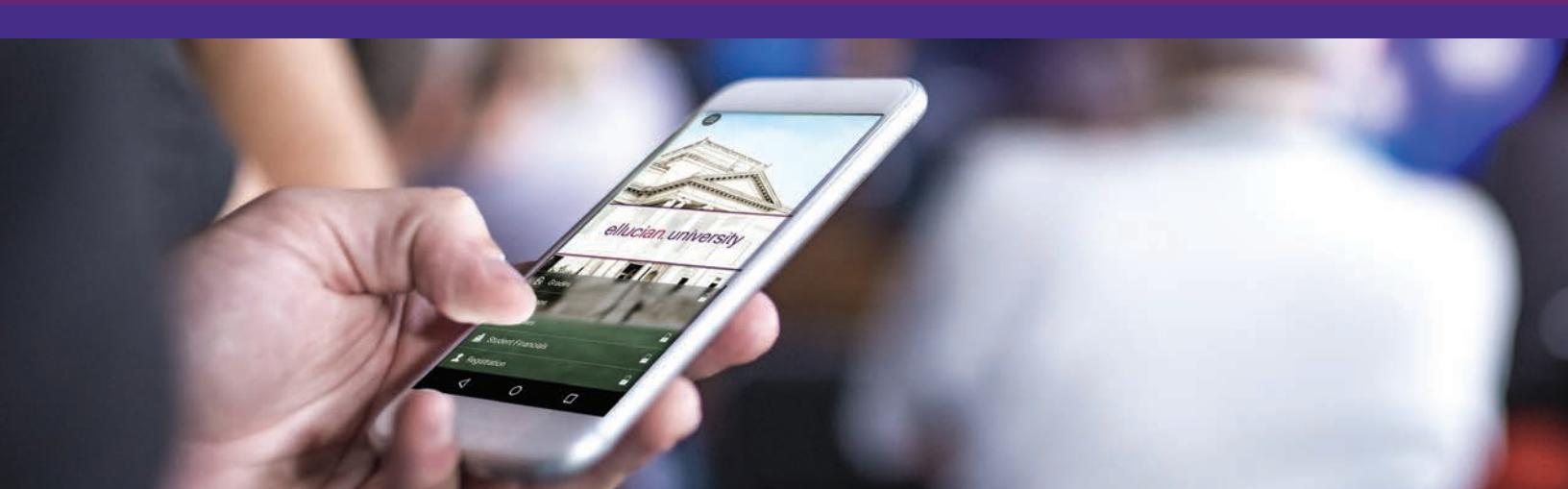




# Ellucian Mobile

*Unify your digital campus*



**In today's fast-paced world, students—as well as many teaching and administrative staff members—expect information and services to be instantly available on any device. But many institutions still offer a patchwork of apps and websites for various departments and services, all with varying logins, interfaces and user rules. The result is a cumbersome user experience that is behind the times and less useful than it should be.**

Ellucian Mobile provides institutions with a highly customisable, easy-to-implement mobile solution designed just for higher education. Ellucian Mobile's unified app with single sign-on lets users access what they need with speed and ease—while also enabling next-level features like push notifications, real-time registration and tailored communications. Ellucian Mobile enables an entire mobile strategy with wide-ranging possibilities for customisation, outreach and messaging.

## **Deliver on expectations**

Native to iOS, Android and Kindle Fire, Ellucian Mobile's versatile architecture ensures that your branded app will work with the devices used most at your institution. Ellucian Mobile offers broad functionality for students, teaching and administrative staff members, letting them get the information they need, when they need it. With the touch of a screen, users can:

- Access native features including university maps, directories, notifications, news, events and multimedia
- Complete transactions with the library, bookstore, and other departments and facilities integrated with Ellucian Mobile
- Manage calendars, events and social media accounts

## **Extend your ERP**

In addition to hosting a wide array of apps and websites, many institutions lack integration between their mobile app and their ERP or SIS. Ellucian Mobile solves those integration issues while providing the seamless mobile experience and functionality that students and employees expect. Ellucian Mobile's native, real-time, out-of-the-box integration with Ellucian ERPs enables no-fuss implementation. Total alignment means that your app evolves right along with your ERP, with updates fully supported.

## Launch in hours; update with ease

Ellucian Mobile's cloud configuration tool makes it easy to create a superior user experience without extensive IT resources or programming expertise. Intuitive design options make it easy to customise your app, while the intuitive interface enables you to go live in hours—no coding knowledge required.

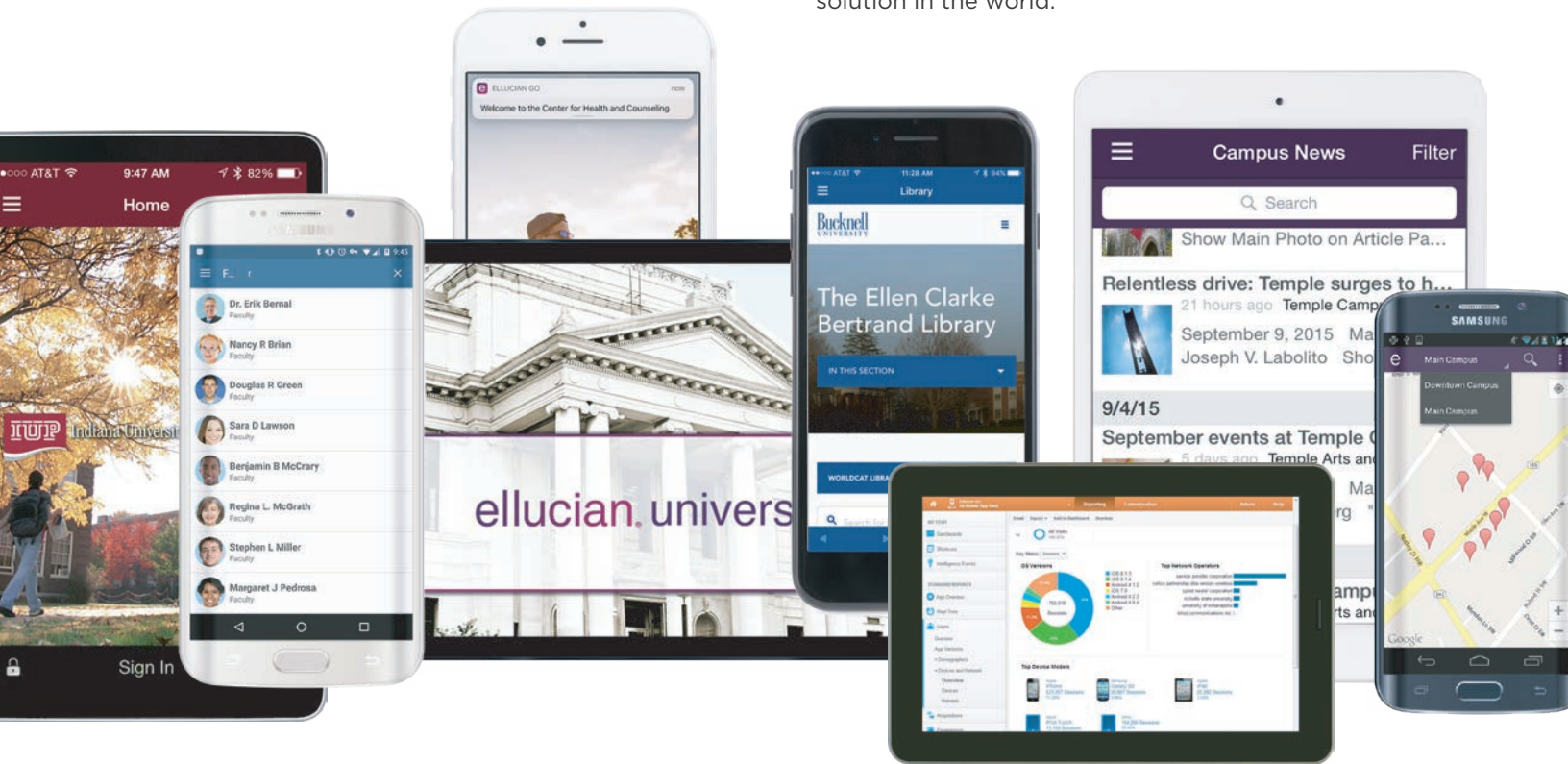
## Measure success

Ellucian Mobile helps institutions understand their users' preferences and improve the mobile experience through built-in Google Analytics. Adoption and usage can be measured and tracked across all audiences; content tracking lets you measure and adapt content based on user demand; and ROI metrics provide a clear picture of your app's value.

## Help students help themselves

At the foundation of every Ellucian solution lies the premise that technology can help students succeed. Ellucian Mobile is no exception. By easing students' access to university life, course registration, financial aid information and communications with advisors and teaching and administrative staff members, every interaction is faster and easier, with less time wasted and more time saved for academic achievement.

Used by more than 900 colleges and universities around the globe, Ellucian Mobile is the most widely adopted mobile solution for higher education. The reliability, scalability and continued evolution of our mobile solution are the reasons we're the most trusted, most adopted mobile solution in the world.



Ellucian is the world's leading provider of software and services higher education institutions need to help students succeed. More than 2,500 institutions in 50 countries rely on Ellucian to help enable the mission of higher education for over 18 million students.

To learn more, visit [www.ellucian.com/emea-ap](http://www.ellucian.com/emea-ap).